



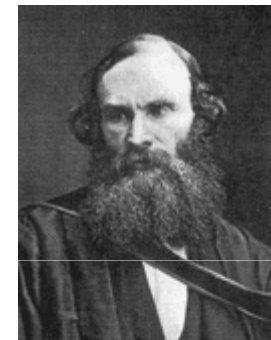
Corporate presentation 2011

1. The problem

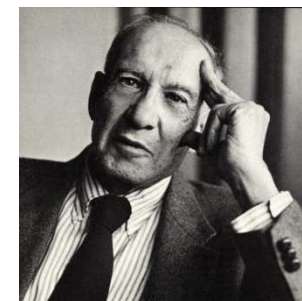
- **Why Energy Management matters:**

- **Energy** represents about **19% of total expenditures** for the typical **office building**
- Facilities managers know that most **buildings consume up to 30% more energy than the necessary**
- Monthly **energy bills give no useful information to reduce** energy usage
- **Energy cost is increasing**
- **Continuously monitoring** a building's energy systems can lead to **reductions of 10% to 15% in annual energy bills.**

“If you can't measure it you can't manage it”



- Lord Kelvin



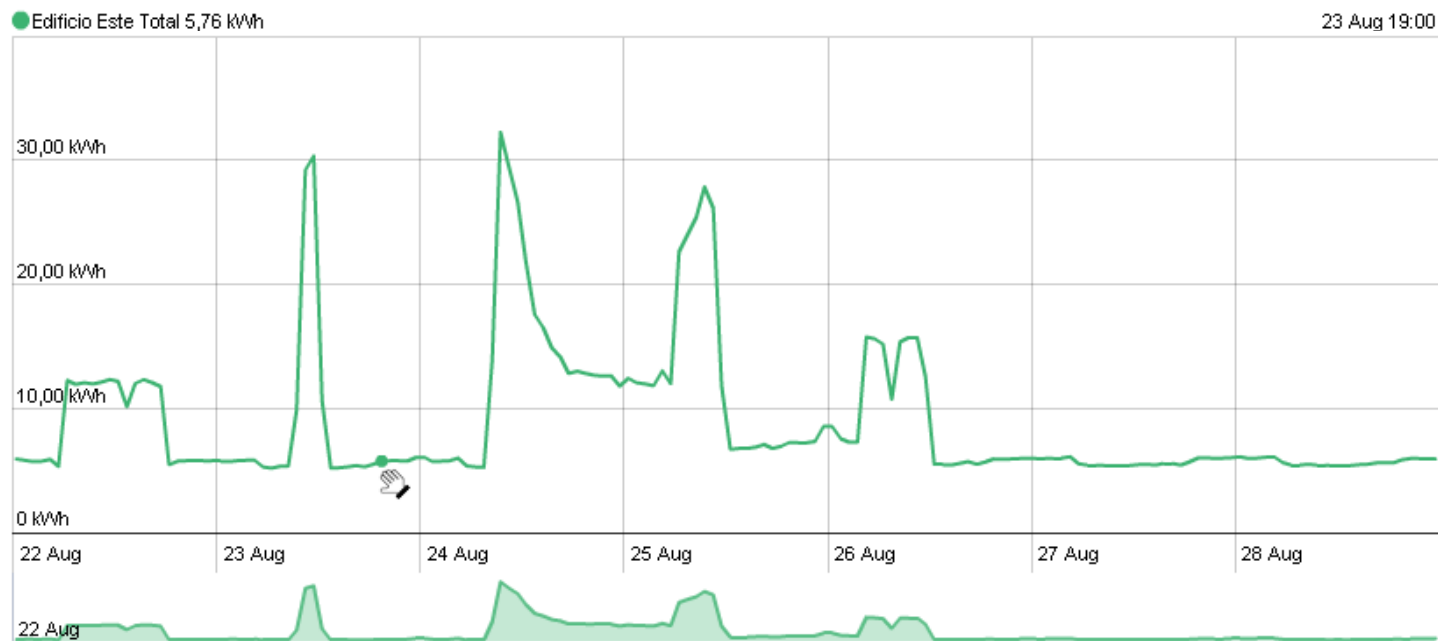
- Peter Drucker



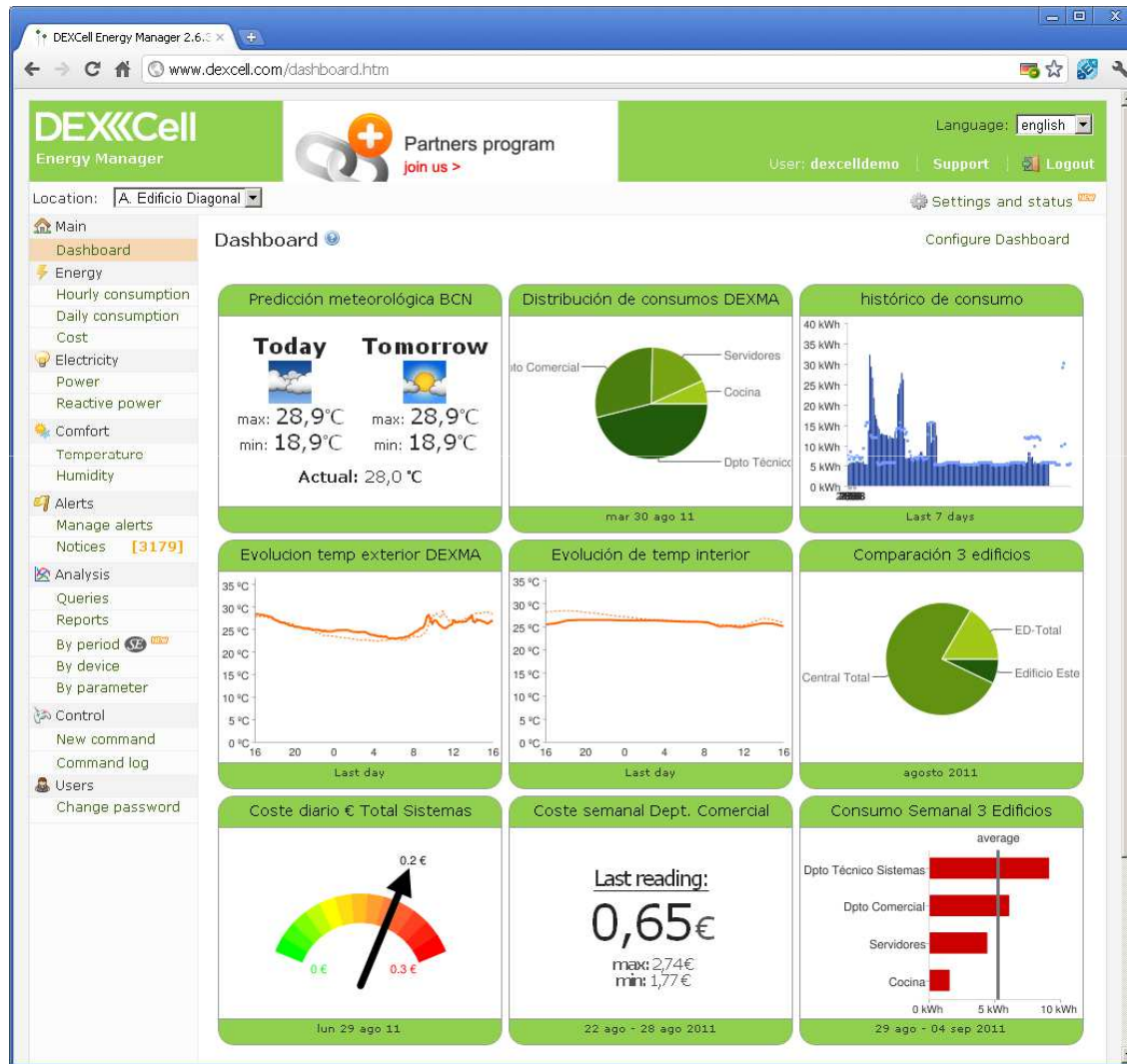
2. The solution

DEXCell

Open software-as-a-service platform to reduce energy cost, through monitoring, analysis and recommendations



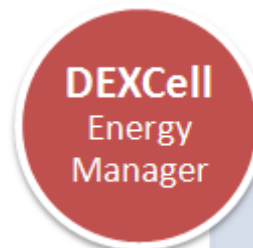
3. Products and Services



1 **Software-as-a-service**
monitoring, analytics,
reporting, alarms and
behavior

2 **Hardware-vendor neutral**
17+ manufacturers
integrated

3 **White label**
Each Partner and his end-
clients have their own
DEXCell (logo, header,
url...)

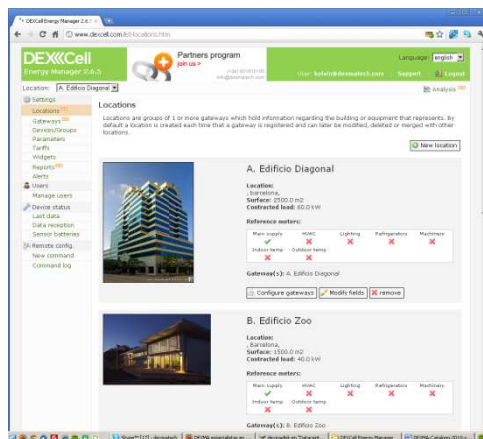


Features DEXCell

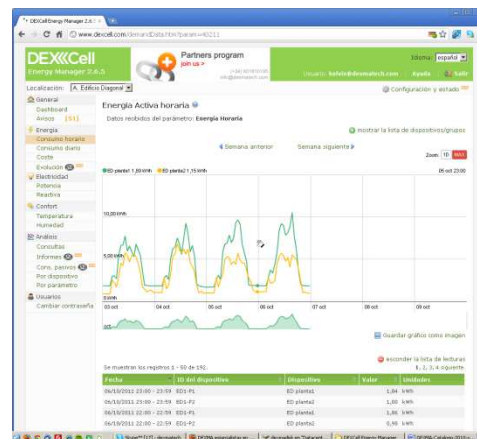
Monitoring



- Unlimited storage of information
- Centralization of multiple locations
- Custom device map
- System status (communications, batteries)
- Data export Excel, CSV or XML
- Logical or geographical groups



Locations



Historical data

Features DEXCell

Analytics



- Customized dashboards
- Daily, weekly, monthly or yearly (in table or graphical form) historical consumption information
- Calculated parameters (average, MAX, MIN)
- Correlation data (consumption vs. temperature)
- Automatic generation of custom reports (pdf) **SE**
- Implementation of the official electrical rates and simulation **SE**
- KPIs (kWh/production units, kWh/occupant) **SE**
- Benchmarking through KPIs (m2,..) **SE**
- Screening and monitoring of optimal consumption **SE**

SE Features inside Smart Engine Module (Optional)



Dashboard



Rate simulation

Features DEXCell

Alarms and reporting

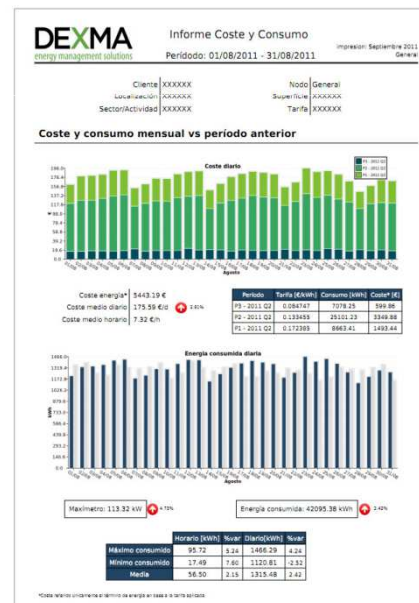


- Web, e-mail or SMS alerts
- Automatic generation of standard/custom reports (pdf)
- Remote instant actuation (ON/OFF)
- BMS Integration: control programming routines (under demand)

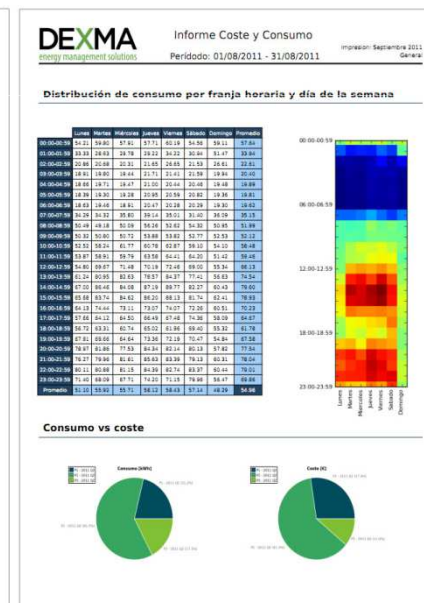
The screenshot shows the 'Set new alert' configuration page in the DEXCell Energy Manager. The interface includes a sidebar with navigation options like 'Main', 'Dashboard', 'Map', 'Electricity', 'Cost', 'Power', 'Comfort', 'Analysis', 'Alerts', 'Control', 'Settings', and 'Users'. The main content area is titled 'Set new alert' and contains the following fields:

- Alert name:** 'Luces abiertas por la noche'
- Condition:** 'Luminosidad' with a value of '100 LUX'.
- durante:** 'medición/es consecutiva/s'
- Applies to:** A list of devices including 'TempHum outdoor' and 'TempHum indoor'.
- Daytime:** A range from '00:00' to '08:00'.
- Days:** 'Monday' through 'Sunday'.
- Activate:** Radio buttons for 'Yes' and 'No'.
- Notice me, at most, each:** A dropdown menu set to 'event'.
- Send notice by email?:** Radio buttons for 'Yes' and 'No'.
- e-mail address/es*:** 'info@dexmatech.com'

web / email / SMS alarms



Reporting



Features DEXCell

Behavior

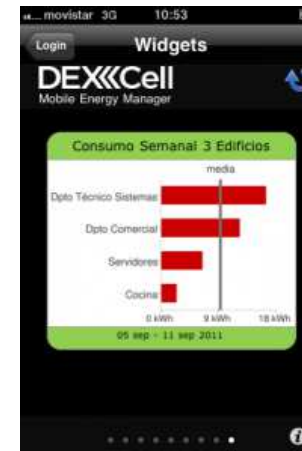
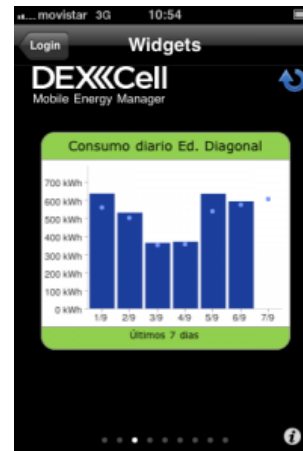


- Web interface and multi-language
- User profiles: technical, energy manager, financial, end-user
- Compatible with large corporate displays, showing consumption, trends, tips, etc. **(SE)**
- Insert comments and incidents

(SE) Features inside Smart Engine Module (Optional)

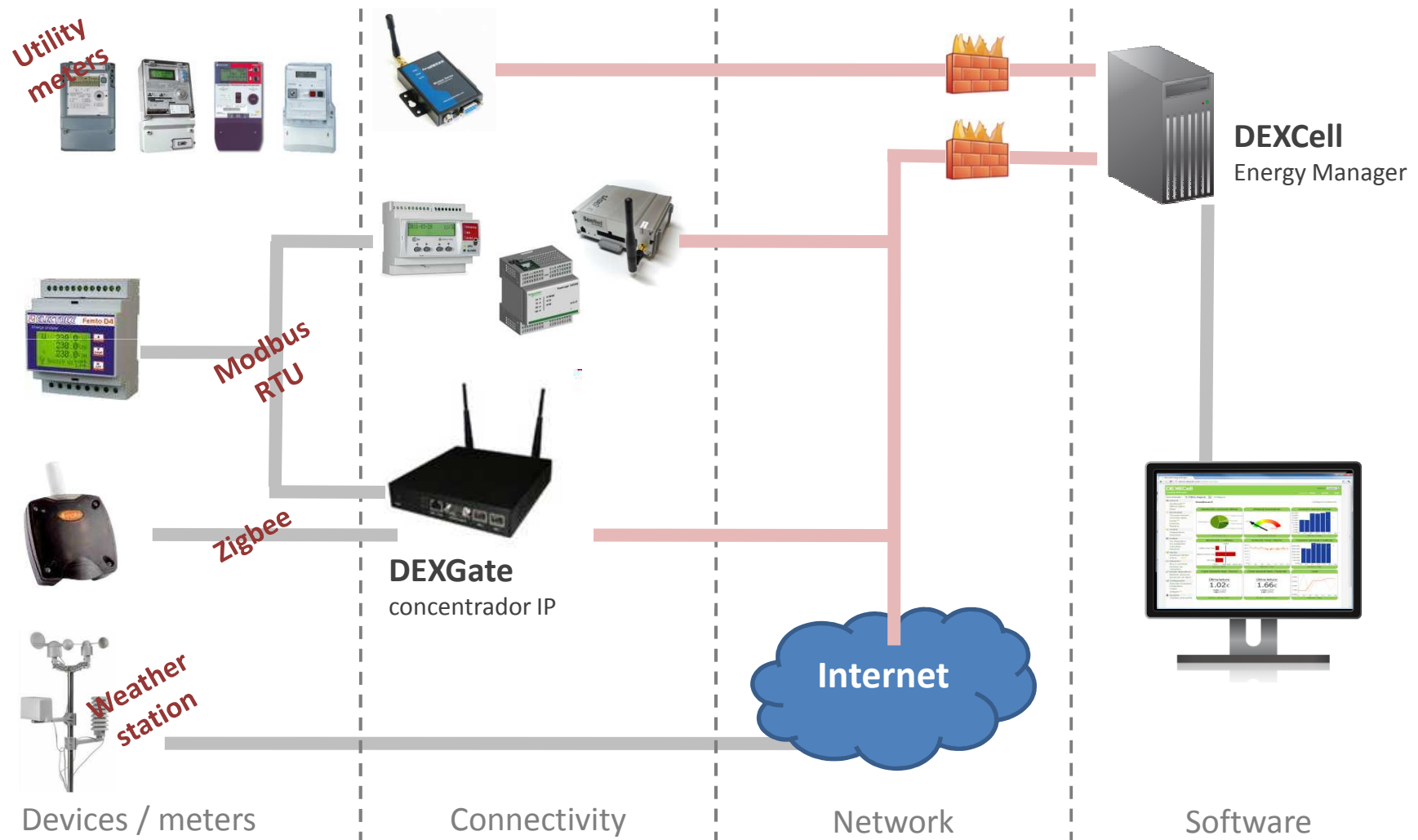


Information display (TV/LCD)



Mobile application (iPhone)

3.2 Architecture



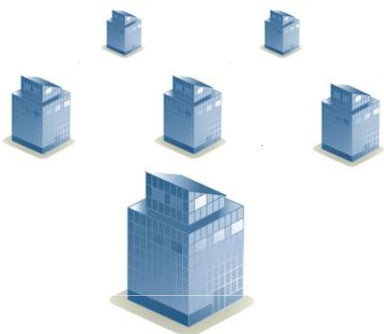

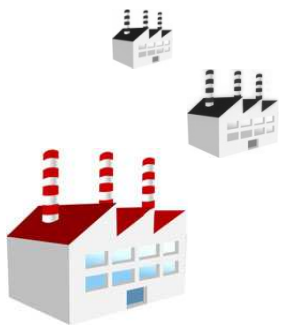

3.3 Compatible manufacturers



Electricity
meters
DLMS



4. Markets

 <p>1. Public administration and corporate</p>	 <p>2. Retail and services</p>	 <p>3. Industry</p>	 <p>4. Residential</p>
<p>DEXCell Energy Manager 2.6.6</p>			<p>DEXCell Home Edition</p>

4.2 Latest deployments



Buildings

- Public administration
- Corporate
- Universities
- Schools

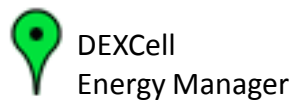
Commercial

- Supermarkets
- Retailing
- Restaurants

Industry

- Automotive
- Pharmaceutical
- Food
- Metallurgy

Residential



5. Partner Network



- Energy Services Companies (ESCOs)
- Facility Management / Integrators / Engineering companies
- Utilities & Telecoms

Gold Partners (#10)



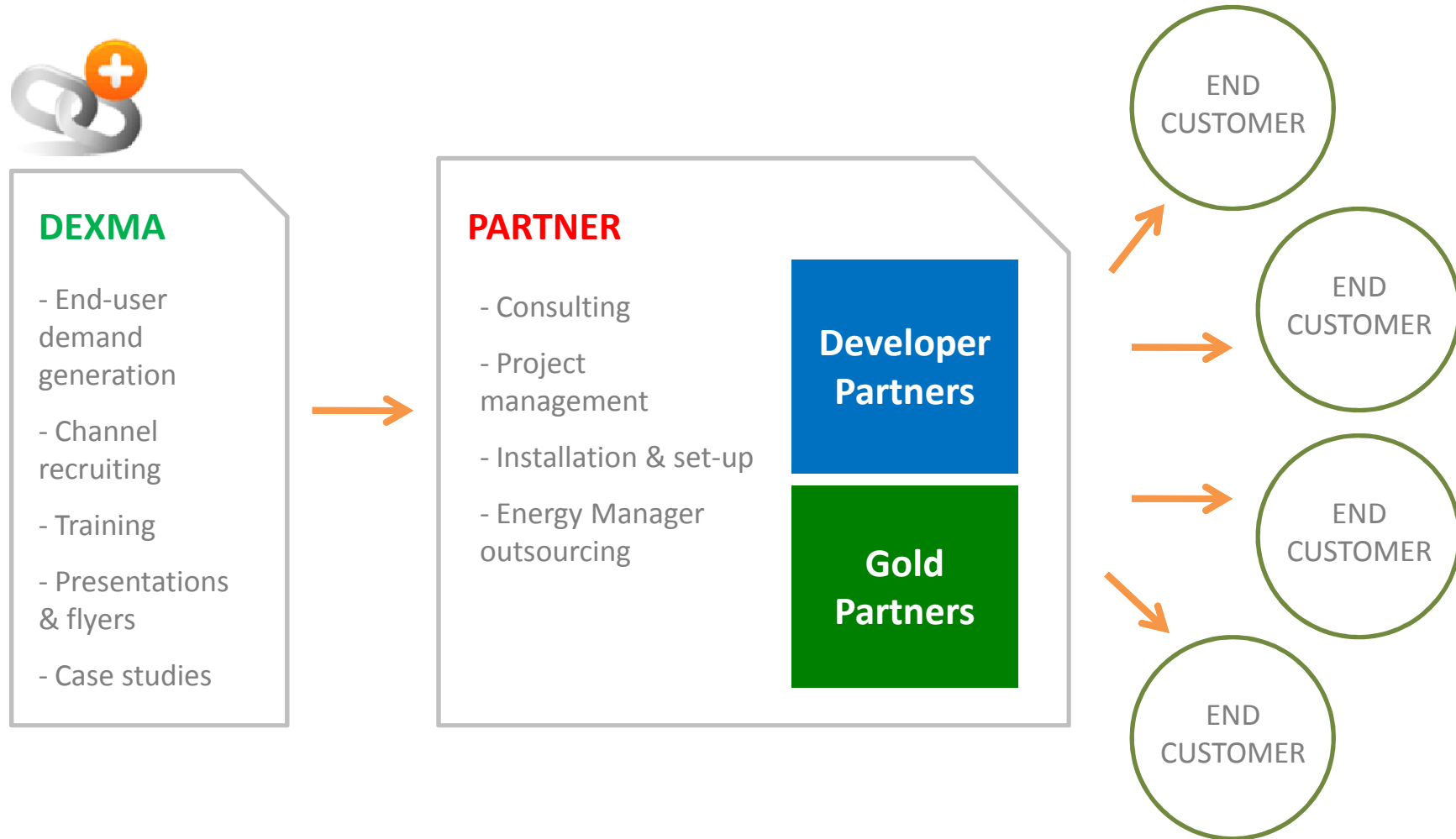
Developer Partners (#20)



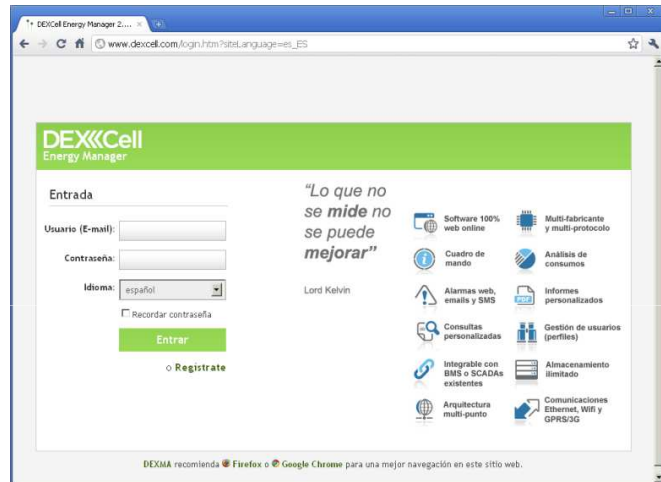
International Partners (#3)



5.2 Partners Program



6. DEMO



¡Try it today!

DEXCell Energy Manager 2.6

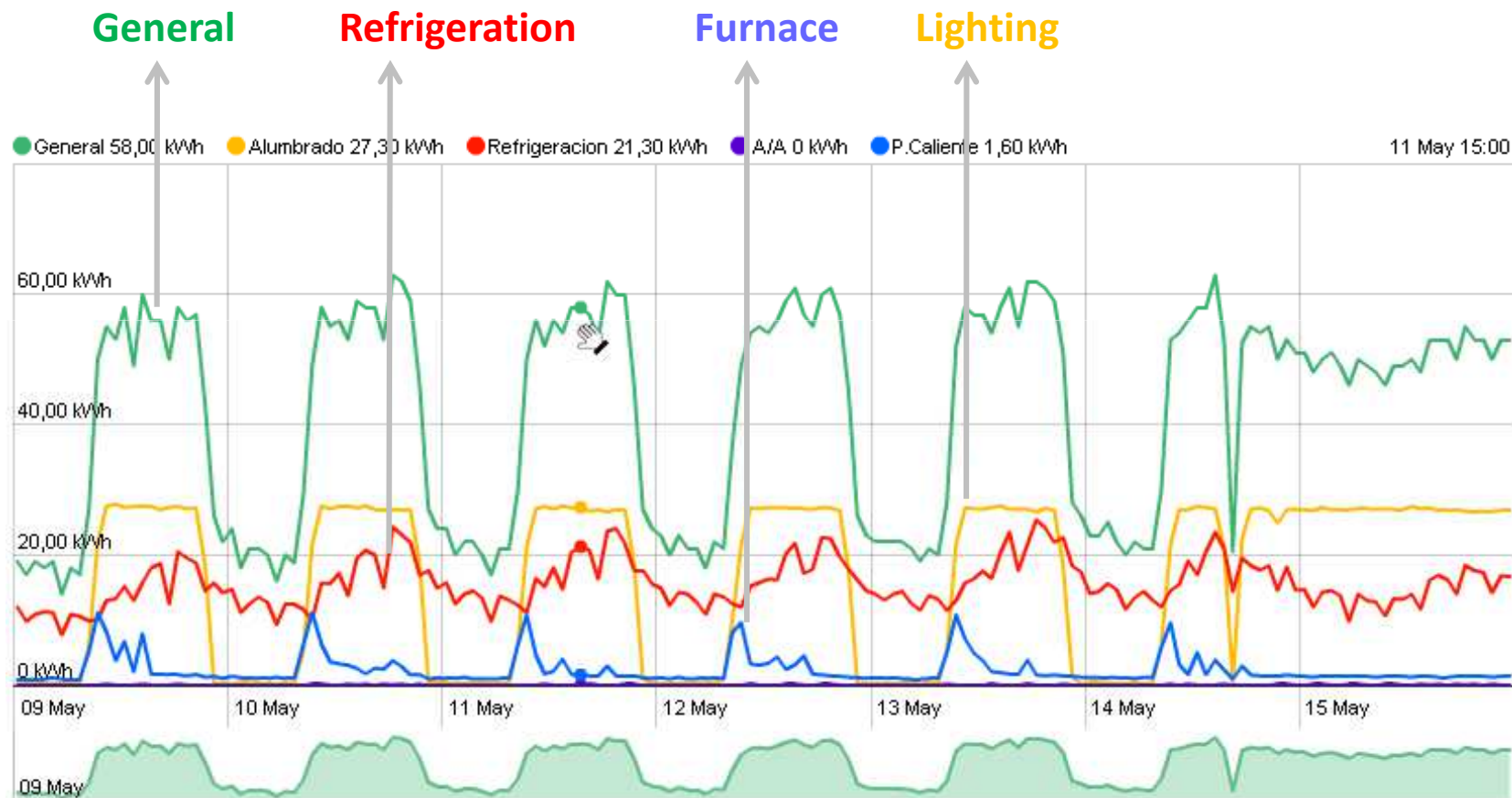
DEMO Online at
www.dexcell.com

Custom URL examples:

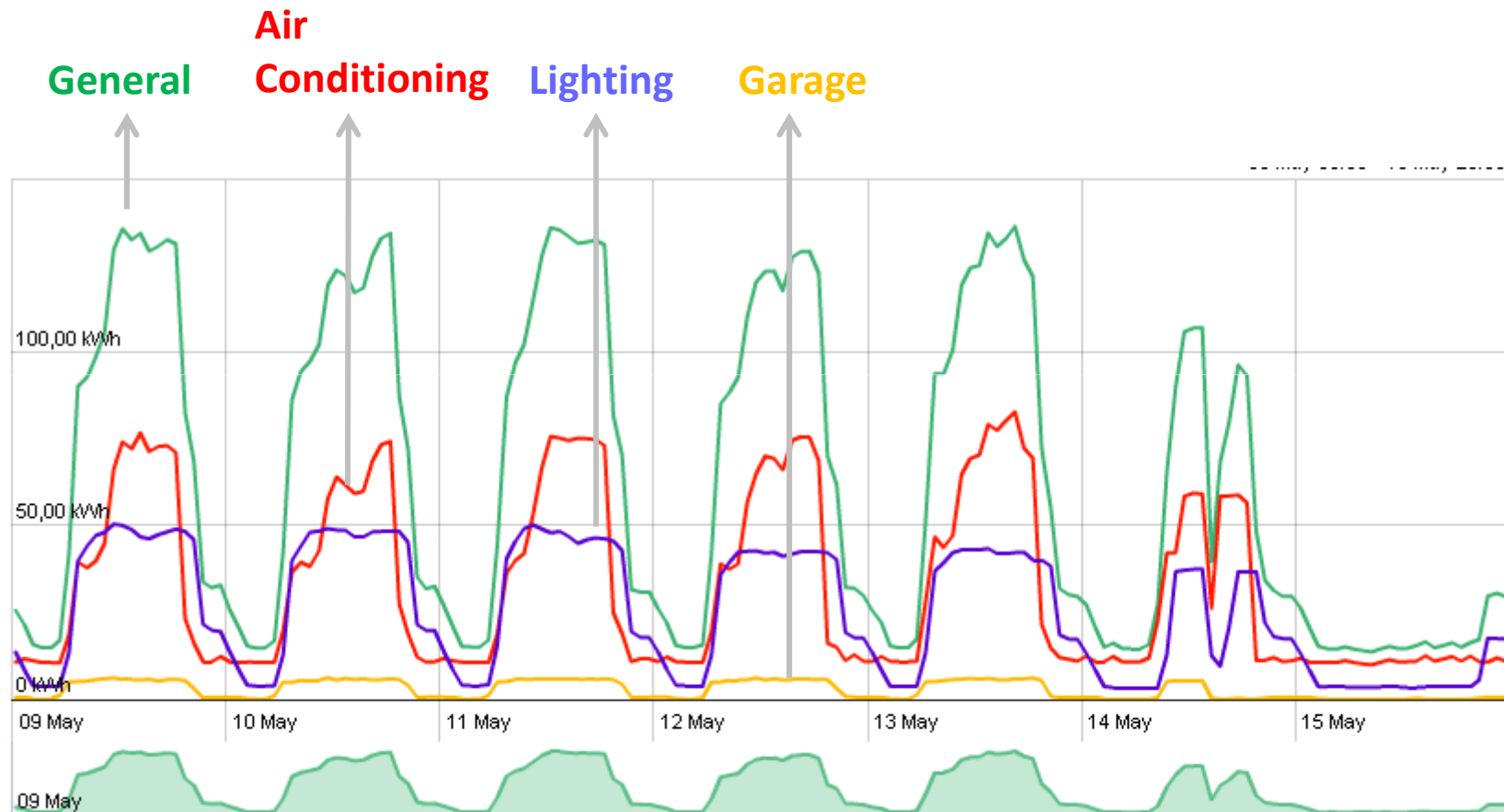
<http://emanager.anturitech.com>

<http://sem.engineria.es>

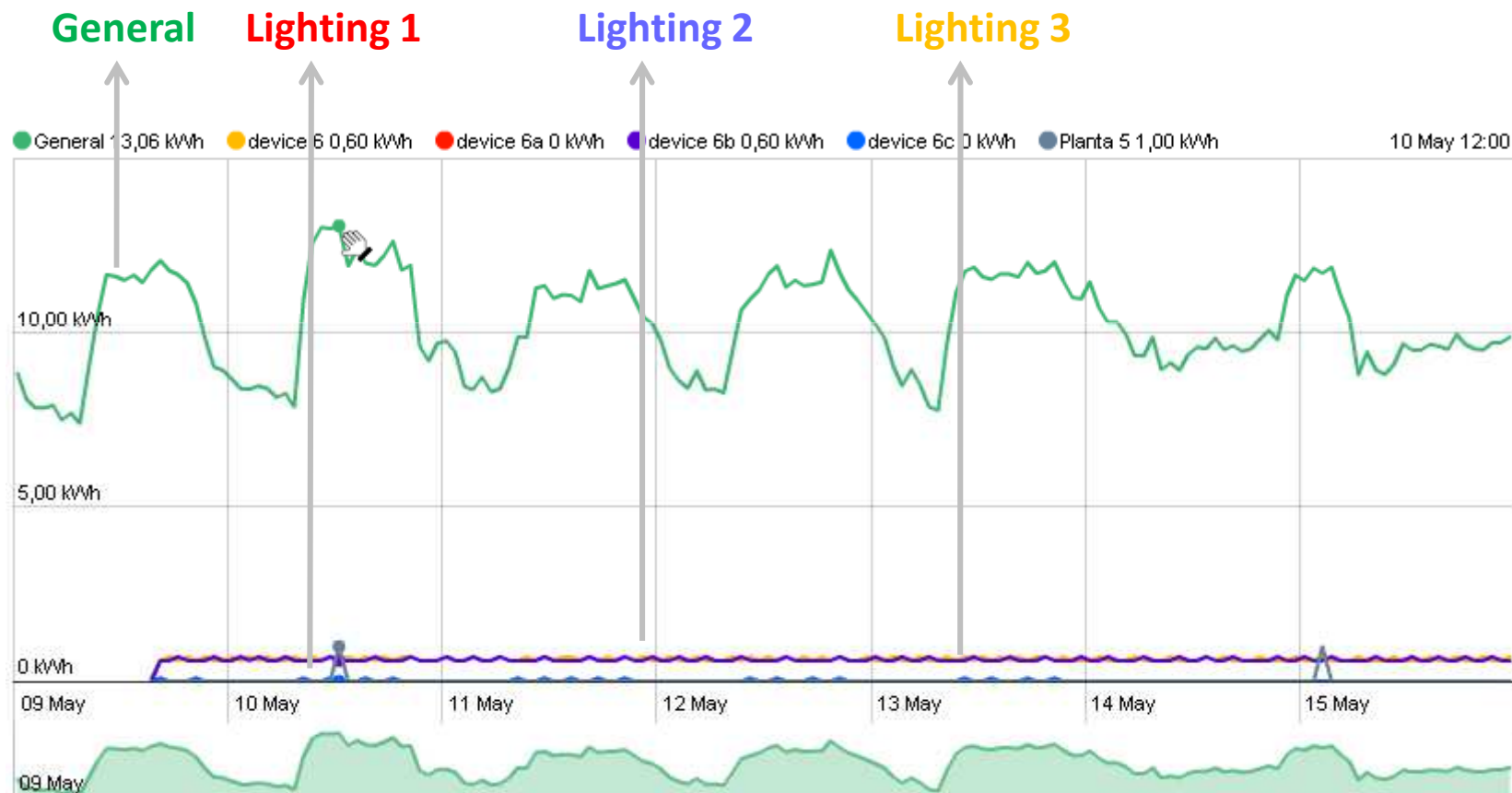
4.5 Example: supermarket



4.3 Example: car dealership



4.4 Example: parking



7. Advantages

- **DEXCell Energy Manager** It's used by energy managers and facilities managers to monitor and manage their energy use, and by the energy consultants and building-services engineers that advise them.
- **Energy saving** it's mainly about finding:
 - When and where you're wasting energy...
 - How much energy you're wasting...
 - How much progress you've made at reducing consumption.

Contact with us



DEXMA
Marie Curie, 8-14
08042 Barcelona
SPAIN



(+34) 93 181 01 95



(+34) 615 475 063



sales@dexmatech.com



www.dexmatech.com



@dexma